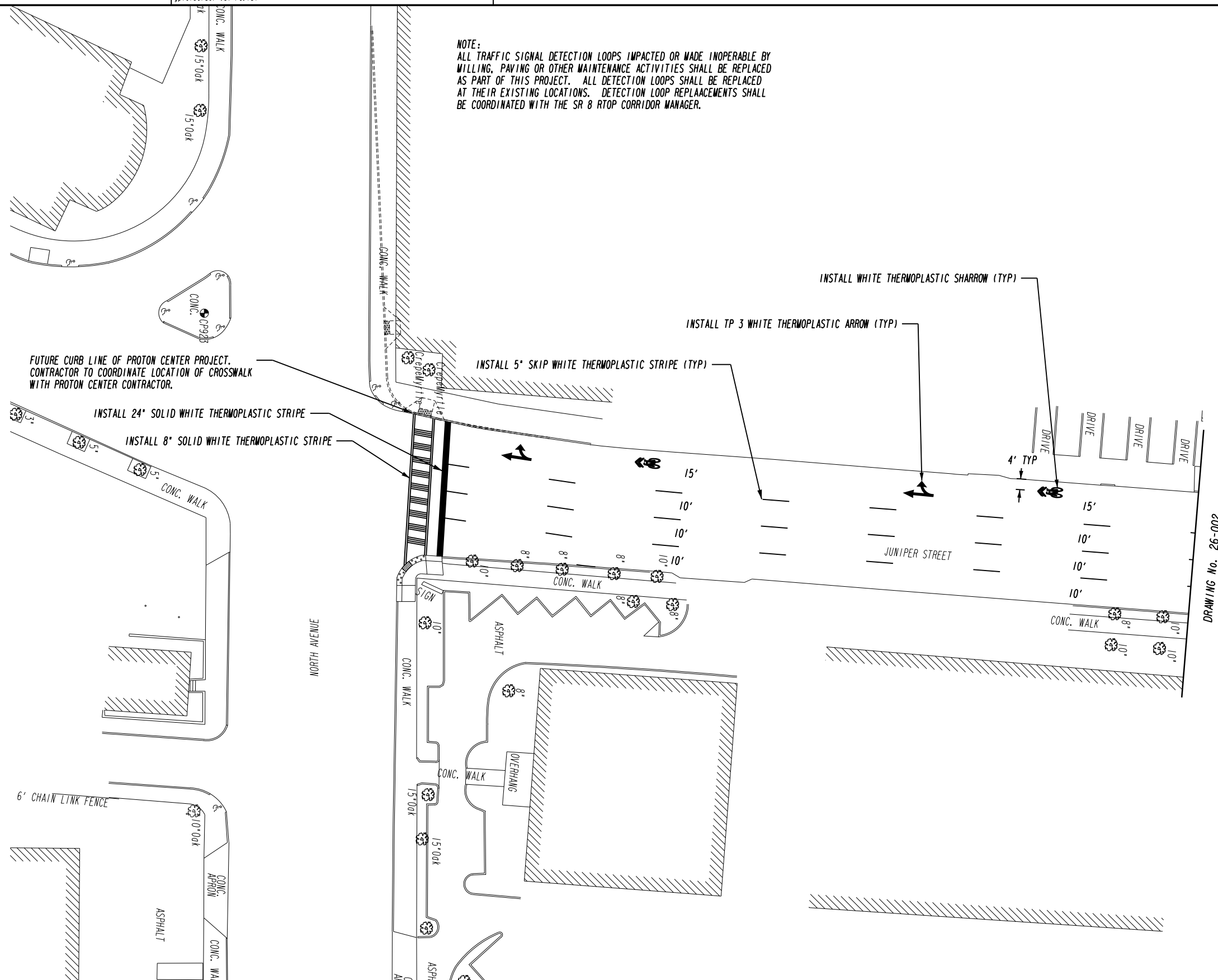


NOTE:
ALL TRAFFIC SIGNAL DETECTION LOOPS IMPACTED OR MADE INOPERABLE BY MILLING, PAVING OR OTHER MAINTENANCE ACTIVITIES SHALL BE REPLACED AS PART OF THIS PROJECT. ALL DETECTION LOOPS SHALL BE REPLACED AT THEIR EXISTING LOCATIONS. DETECTION LOOP REPLACEMENTS SHALL BE COORDINATED WITH THE SR 8 RTOP CORRIDOR MANAGER.



DRAWING No. 26-002

FUTURE CURB LINE OF PROTON CENTER PROJECT. CONTRACTOR TO COORDINATE LOCATION OF CROSSWALK WITH PROTON CENTER CONTRACTOR.

INSTALL 24" SOLID WHITE THERMOPLASTIC STRIPE

INSTALL 8" SOLID WHITE THERMOPLASTIC STRIPE

INSTALL 5" SKIP WHITE THERMOPLASTIC STRIPE (TYP)

INSTALL TP 3 WHITE THERMOPLASTIC ARROW (TYP)

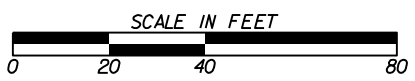
INSTALL WHITE THERMOPLASTIC SHARROW (TYP)

JUNIPER STREET

NORTH AVENUE

6' CHAIN LINK FENCE

Kimley-Horn and Associates, Inc.
 Engineering, Planning, and Environmental Consultants
 817 W. Peachtree Street NW, Suite 601
 Atlanta, GA 30308



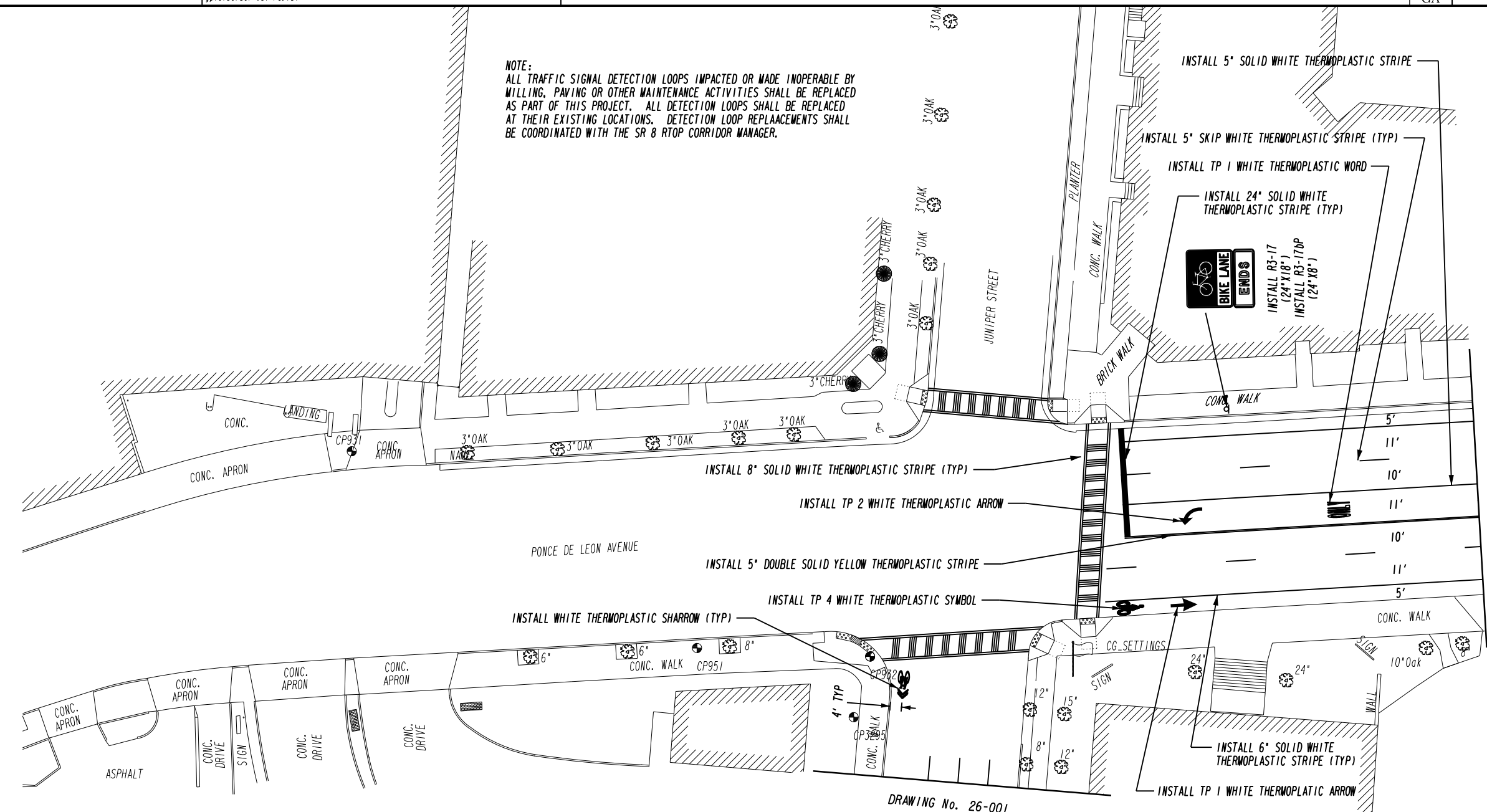
REVISION	DATE	DESCRIPTION

STATE OF GEORGIA
 DEPARTMENT OF TRANSPORTATION
 OFFICE: PROGRAM DELIVERY
SIGNING AND MARKING PLANS

SR 8 (PONCE DE LEON AVENUE)
 PEDESTRIAN SAFETY IMPROVEMENT

DRAWING No.
26-001

NOTE:
 ALL TRAFFIC SIGNAL DETECTION LOOPS IMPACTED OR MADE INOPERABLE BY MILLING, PAVING OR OTHER MAINTENANCE ACTIVITIES SHALL BE REPLACED AS PART OF THIS PROJECT. ALL DETECTION LOOPS SHALL BE REPLACED AT THEIR EXISTING LOCATIONS. DETECTION LOOP REPLACEMENTS SHALL BE COORDINATED WITH THE SR 8 RTOP CORRIDOR MANAGER.



DRAWING No. 26-003

DRAWING No. 26-001

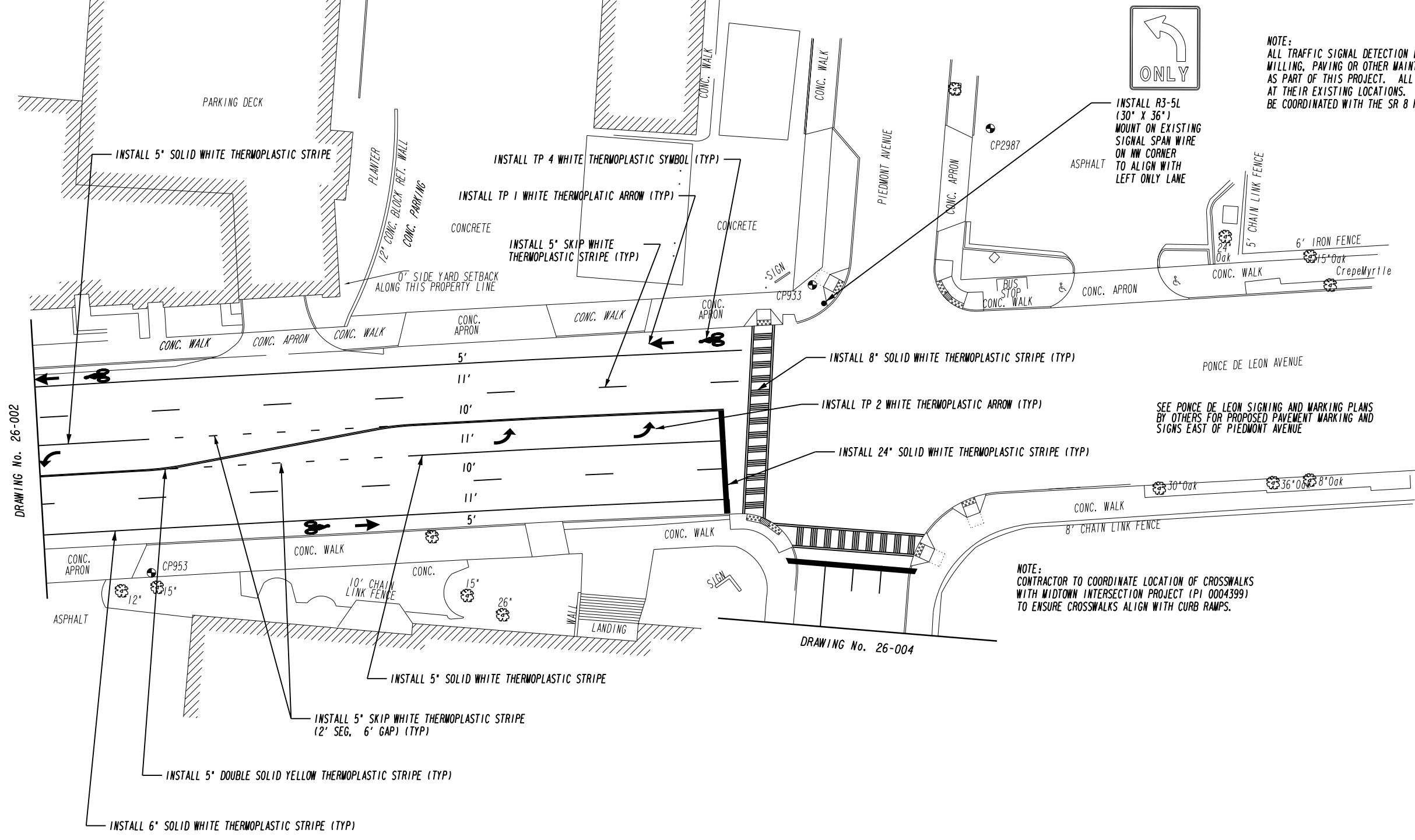
Kimley-Horn and Associates, Inc.
 Engineering, Planning, and Environmental Consultants
 817 W. Peachtree Street NW, Suite 601
 Atlanta, GA 30308



REVISION DATES	

STATE OF GEORGIA
 DEPARTMENT OF TRANSPORTATION
 OFFICE: PROGRAM DELIVERY
SIGNING AND MARKING PLANS
 SR 8 (PONCE DE LEON AVENUE)
 PEDESTRIAN SAFETY IMPROVEMENT

DRAWING No. **26-002**



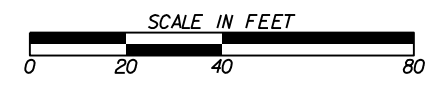
NOTE:
 ALL TRAFFIC SIGNAL DETECTION LOOPS IMPACTED OR MADE INOPERABLE BY MILLING, PAVING OR OTHER MAINTENANCE ACTIVITIES SHALL BE REPLACED AS PART OF THIS PROJECT. ALL DETECTION LOOPS SHALL BE REPLACED AT THEIR EXISTING LOCATIONS. DETECTION LOOP REPLACEMENTS SHALL BE COORDINATED WITH THE SR 8 RTOP CORRIDOR MANAGER.



DRAWING No. 26-002

DRAWING No. 26-004

Kimley-Horn and Associates, Inc.
 Engineering, Planning, and Environmental Consultants
 817 W. Peachtree Street NW, Suite 601
 Atlanta, GA 30308

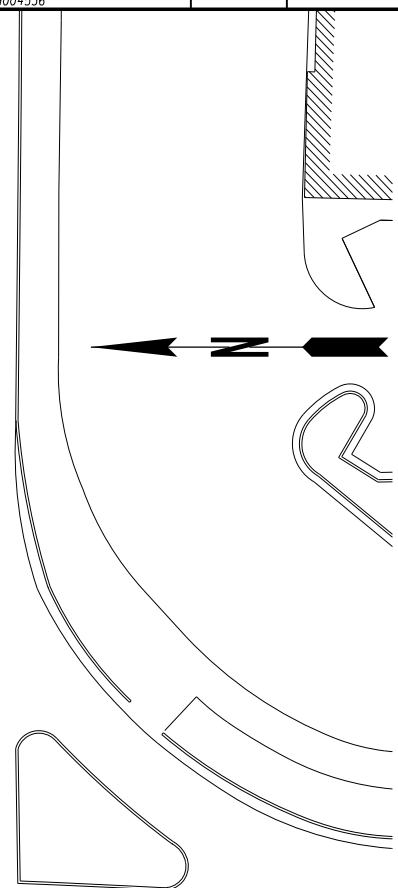
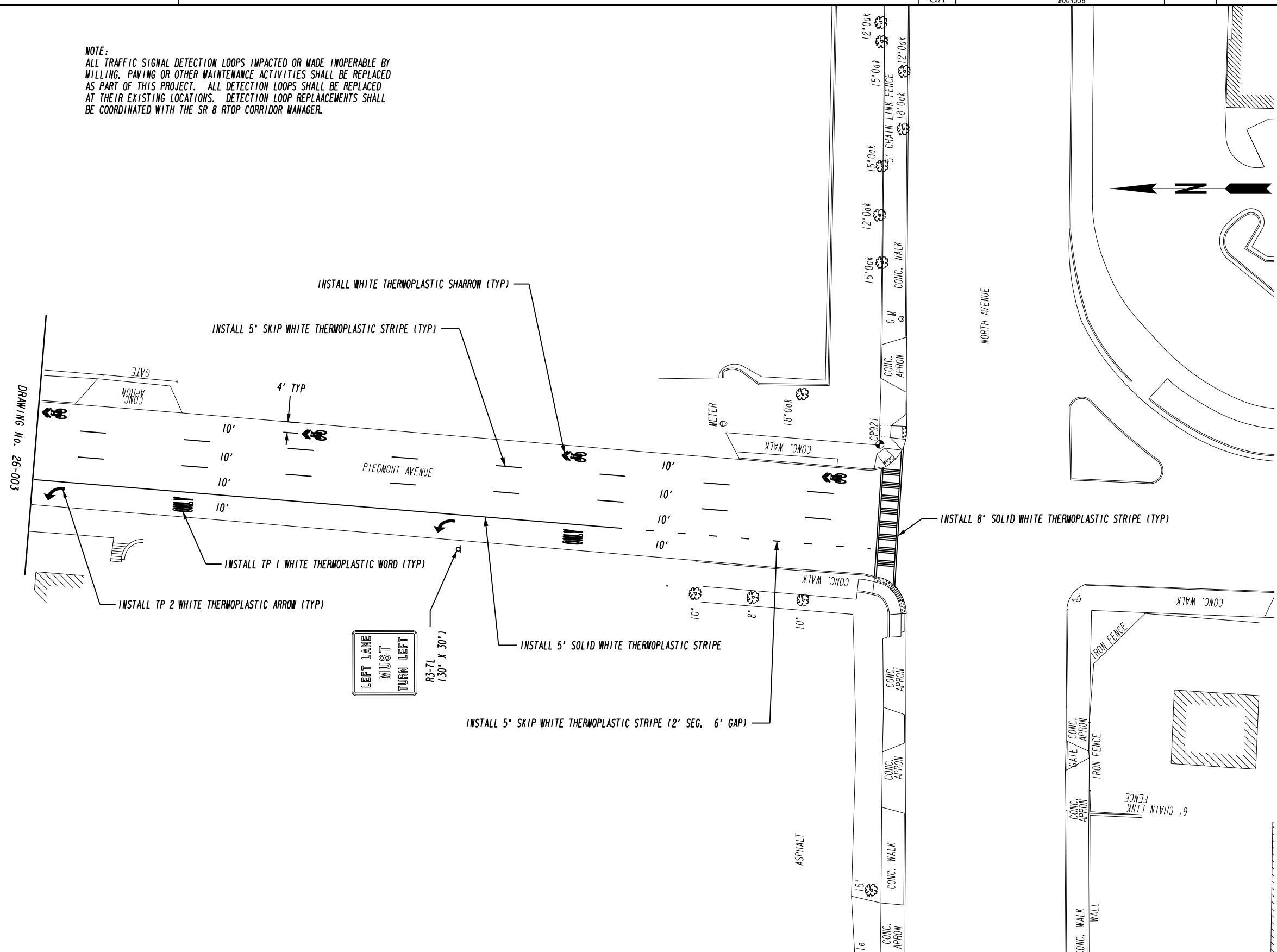


REVISION DATES	

STATE OF GEORGIA
 DEPARTMENT OF TRANSPORTATION
 OFFICE: PROGRAM DELIVERY
SIGNING AND MARKING PLANS
 SR 8 (PONCE DE LEON AVENUE)
 PEDESTRIAN SAFETY IMPROVEMENT

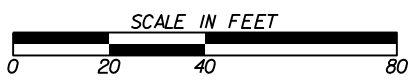
DRAWING No. **26-003**

NOTE:
 ALL TRAFFIC SIGNAL DETECTION LOOPS IMPACTED OR MADE INOPERABLE BY MILLING, PAVING OR OTHER MAINTENANCE ACTIVITIES SHALL BE REPLACED AS PART OF THIS PROJECT. ALL DETECTION LOOPS SHALL BE REPLACED AT THEIR EXISTING LOCATIONS. DETECTION LOOP REPLACEMENTS SHALL BE COORDINATED WITH THE SR 8 RTOP CORRIDOR MANAGER.



DRAWING No. 26-003

Kimley-Horn and Associates, Inc.
 Engineering, Planning, and Environmental Consultants
 817 W. Peachtree Street NW, Suite 601
 Atlanta, GA 30308



REVISION DATES	

STATE OF GEORGIA
 DEPARTMENT OF TRANSPORTATION
 OFFICE: PROGRAM DELIVERY
SIGNING AND MARKING PLANS
 SR 8 (PONCE DE LEON AVENUE)
 PEDESTRIAN SAFETY IMPROVEMENT

DRAWING No. **26-004**